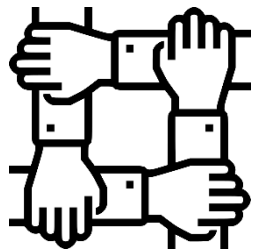




A CHARTER FOR INCLUSIVE RELATIONSHIPS, SEX AND HEALTH EDUCATION (RSHE)

At Parkdale Primary we commit to providing an inclusive Relationships, Sex and Health Education (RSHE), which will enable all pupils to flourish.

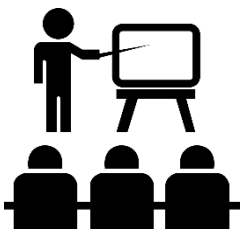
As a Transform school we commit to:



Working in partnership and building positive relationships with parents and carers

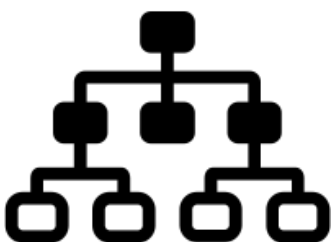
Annual consultation with parents and carers in the development and delivery of the RSHE curriculum

Working in partnership and gaining the views of identified community organisations



Delivering a high quality, age appropriate RHSE curriculum

Creating an RHSE curriculum that focusses on giving the pupils the knowledge they need to make informed decisions about their wellbeing, health and relationships



Creating and sharing a RSHE curriculum framework and provide clarity on how it is organised and delivered

Creating an RHSE curriculum based on accurate information, including about the law and legal rights