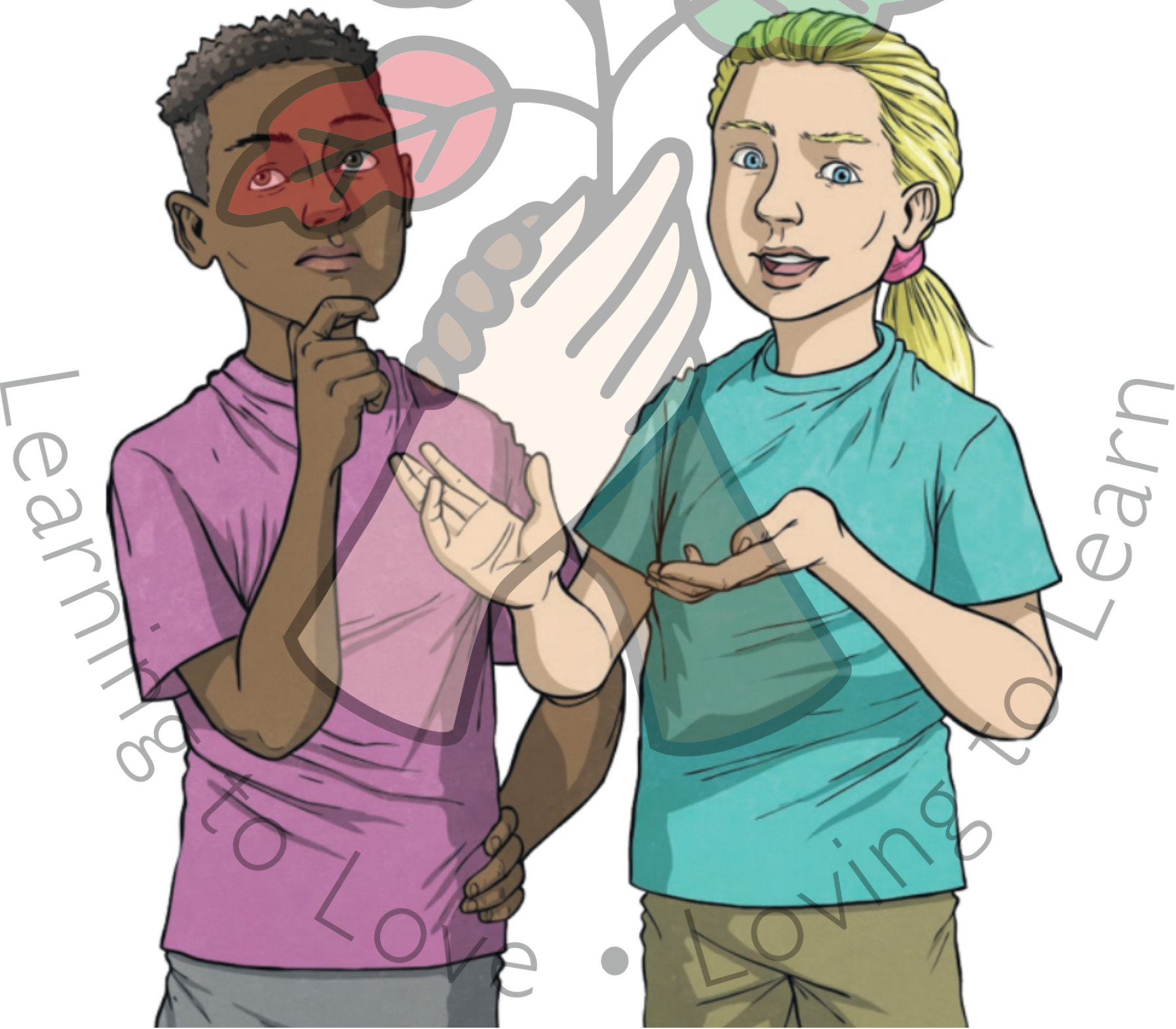
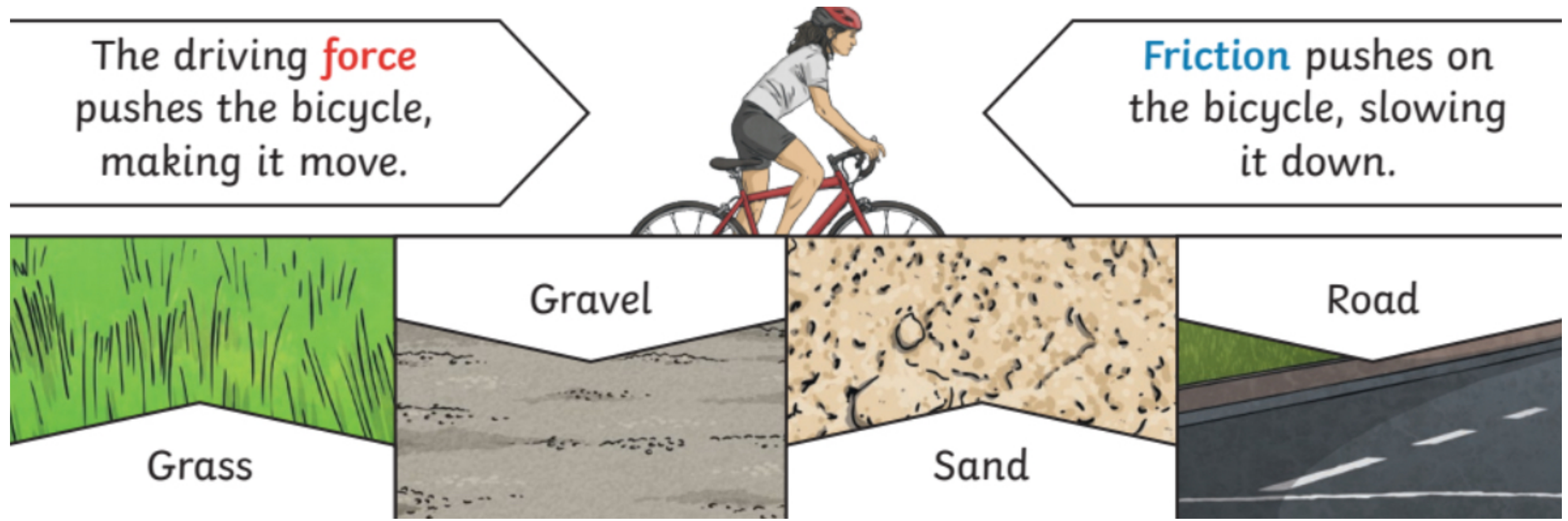


Key Vocabulary

surface	The top layer of a something.
forces	Pushes or pulls.
friction	A force that acts between two surfaces or objects that are moving, or trying to move, across each other.

Key Knowledge

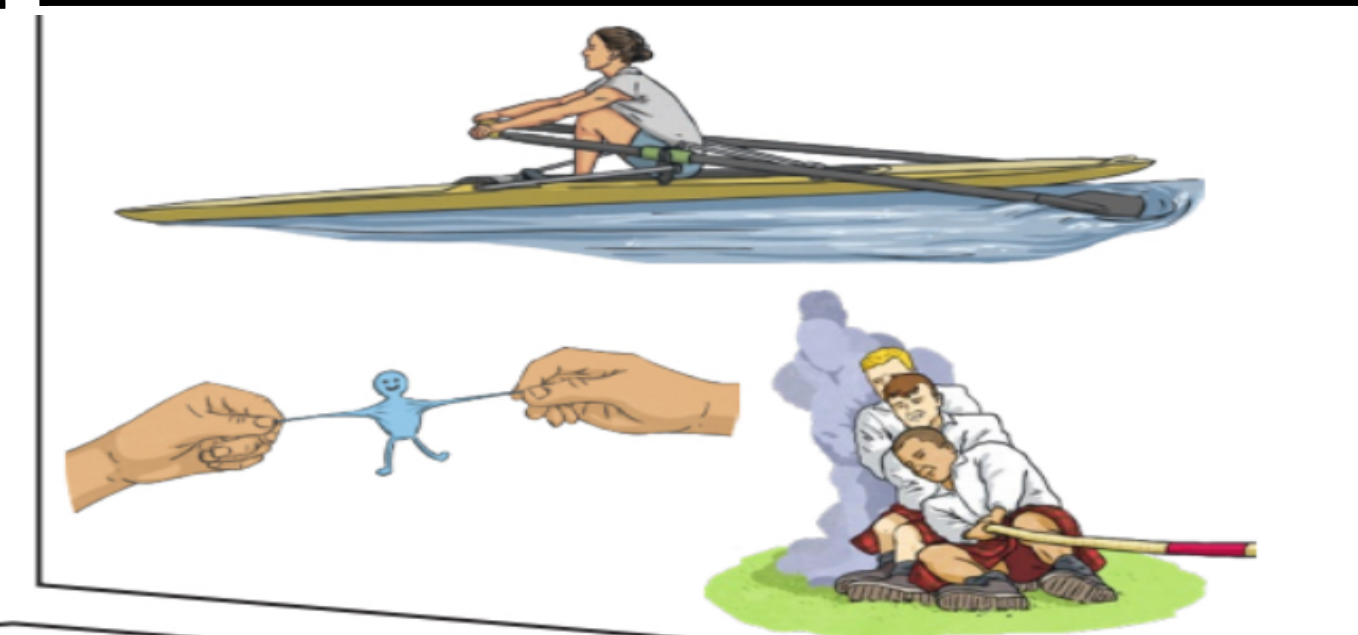
Different **surfaces** create different amounts of **friction**. The amount of **friction** created by an object moving over a **surface** depends on the roughness of the **surface** and the object, and the **force** between them.



Pushes



Pulls

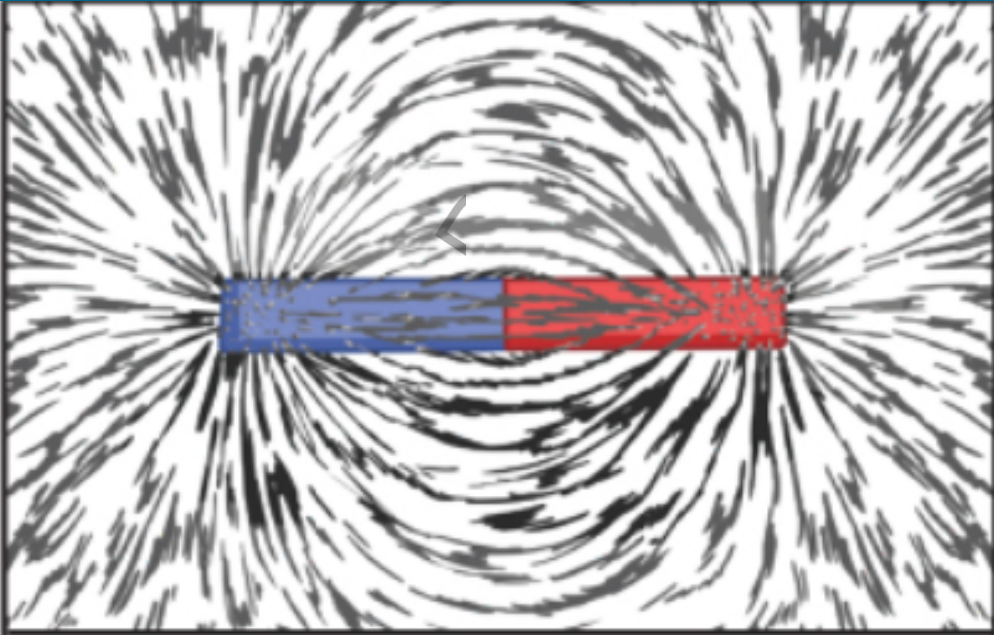


Forces will change the motion of an object. They will either make it start to move, speed up, slow it down or even make it stop.


Key Vocabulary

repel	Repulsion is a force that pushes objects away. For example, when a north pole is placed near the north pole of another magnet, the two poles repel (push away from each other).
magnetic field	The area around a magnet where there is a magnetic force which will pull magnetic objects towards the magnet.
magnet	An object which produces a magnetic force that pulls certain objects towards it.
magnetic	Objects which are attracted to a magnet are magnetic. Objects containing iron, nickel or cobalt metals are magnetic.
poles	North and south poles are found at different ends of a magnet.
attract	Attraction is a force that pulls objects together. For example, when a north pole is placed near the south pole of another magnet, the two poles attract (pull together).

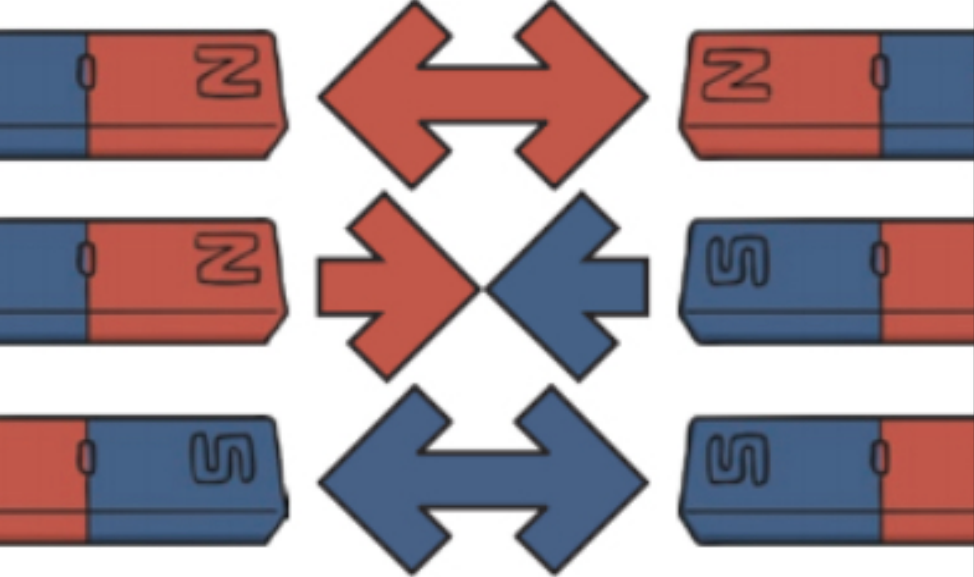
Key Knowledge



Like poles repel.
Opposite poles attract.



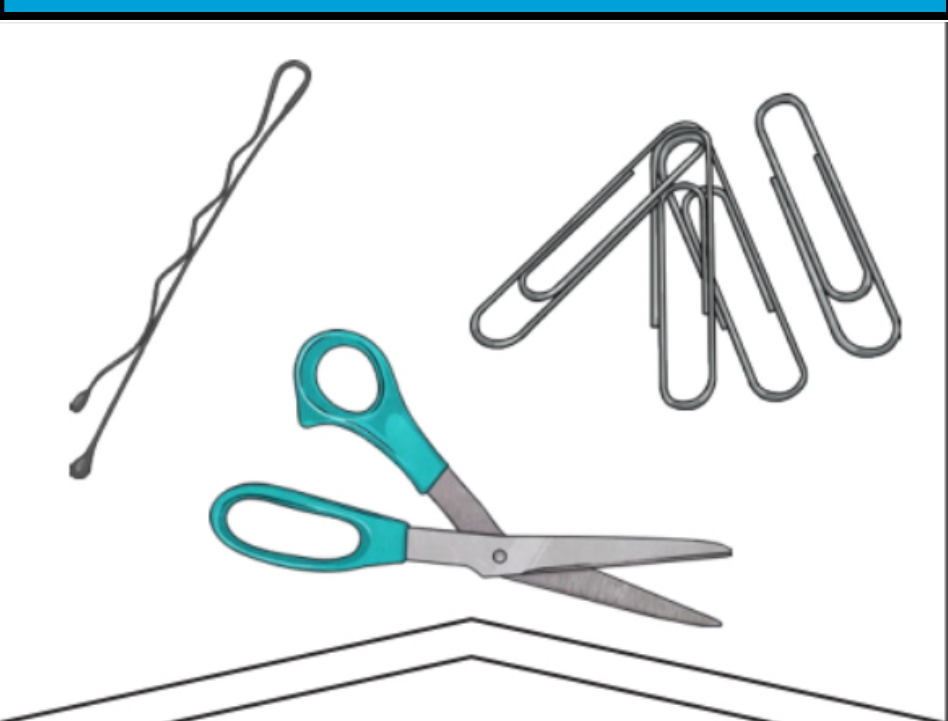
A magnetic field is invisible. You can see the magnetic field here though. This is what happens when iron filings are placed on top of a piece of paper with a magnet underneath.



The needle in a compass is a magnet. A compass always points north-south on Earth.

Lea...

Magnetic ✓



These objects contain iron, nickel or cobalt. Not all metals are magnetic.

Non-magnetic X



These objects do not contain iron, nickel or cobalt.